

INVITATION

U23 Minigolf Challenge 2016
Porto, Portugal

U23

2016

P
O
R
T
O



- **Mixed teams (female/male) of 4 players:**
 - All players must have been born from 1993 onwards;
 - Players born in 1987 or later can be included in the team if they have no participations in any national team competitions in 2014 or 2015.

- **U23-Mode (Round Robin in two groups + play offs, team vs. team with a total score of won lanes) will be applied.**
- **There will be a strokeplay ranking list for individual players.**



FEE

Player: € 20

Coach: € 10

(includes participation, training, opening and closing ceremonies)

**Deadline for registration
29 February 2016**



S C H E D U L E

Official training
28 – 29 April

Coach meeting
29 April

Opening ceremony
29 April

Competition
30 April – 1 May

Closing ceremony
1 May

Information concerning the times will follow soon.



Organisation:

Clube de Minigolfe do Porto
Federação Portuguesa de Minigolfe



geral@clubeminigolfeporto.com

ACCOMMODATION

Breakfast, wi-fi and all taxes included.

HF TUELA PORTO ***

Twin room EUR 62/night

www.hfhotels.com



HF IPANEMA PORTO ****

Twin room EUR 68/night

www.hfhotels.com



HF IPANEMA PARK *****

Twin room EUR 77/night

www.hfhotels.com



HOTEL BOA-VISTA ***

Twin room EUR 74,61/night

Twin + extra bed EUR 94,5/night

www.hotelboavista.com



Contact us for reservation

geral@clubeminigolfeporto.com

FINDING YOUR AWAY AROUND PORTO



RENTAL CARS

You can pick-up a car at the airport or around the city. Here are a few useful links:

Europcar

<http://www.europcar.pt/>

Hertz

<https://www.hertz.pt/>

Turiscar

<http://www.turiscar.pt/>

Autoeurope

<http://www.autoeurope.pt/>

TAXI



Airport > CM Porto [approx. 15km -> **20min** -> **20€**]

City Centre > CM Porto [approx. 6km -> **10-15min** -> **10€**]

Cais de Gaia / Wine Cellars > CM Porto [approx. 7km -> **15min** -> **10€**]

Just dial: +351 912 301 251 / +351 917 555 085

METRO



This is a fast and reliable means of transportation if you're looking to visit Porto and its outskirts. The ticket is the same as for the bus and once you validate it you can travel as much as you want for one hour. However, be careful to check carefully across how many zones you will be travelling and make sure you buy the appropriate ticket (**if you're travelling across two zones, you should have a Z2 ticket, if you're travelling across three zones, a Z3, and so on.**)

Here you can find maps and timetables: <http://www.metrodoporto.pt/en>



BUS

If you would like to use the bus, make sure you buy your ticket in advance (at one of the many 'Payshops', just look for the red sign) as it will be cheaper than buying it inside the bus (+- €1.20/€1.85). **These tickets can be used both for the bus and the METRO.**

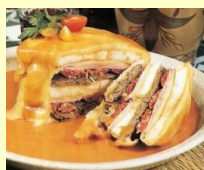


TYPICAL FOOD

FRANCESINHA

The most typical dish from Porto: a sandwich with a good steak, some fresh sausage and ham, covered in cheese and in a hot sauce made with tomato, beer, meat and a whole lot more. It usually comes with a side of home-made French fries, can have a fried egg on top of it and goes well with some cold beer.

[learn more at <http://en.wikipedia.org/wiki/Francesinha>]



BACALHAU (CODFISH)

It's said that *bacalhau* can be cooked in more than a hundred ways, and all of them are good. So be sure to try as many as you can.



PORT WINE CELLARS

GRAHAM

On foot: Rua Rei Ramiro, 514
By car: Rua do Agro, 141
+351 223 776 484

RAMOS PINTO

Av. Ramos Pinto, 380
+351 936 809 283

QUINTA DO NOVAL

Av. Diogo Leite, 256
+351 223 770 282

KOPKE

Av. Diogo Leite, 310/312
+351 223 746 660

SANDEMAN

Largo Miguel Bombarda, 3
+351 223 740 533

OFFLEY FORRESTER

Rua do Choupelo, 54
+351 223 743 852

PORTO

